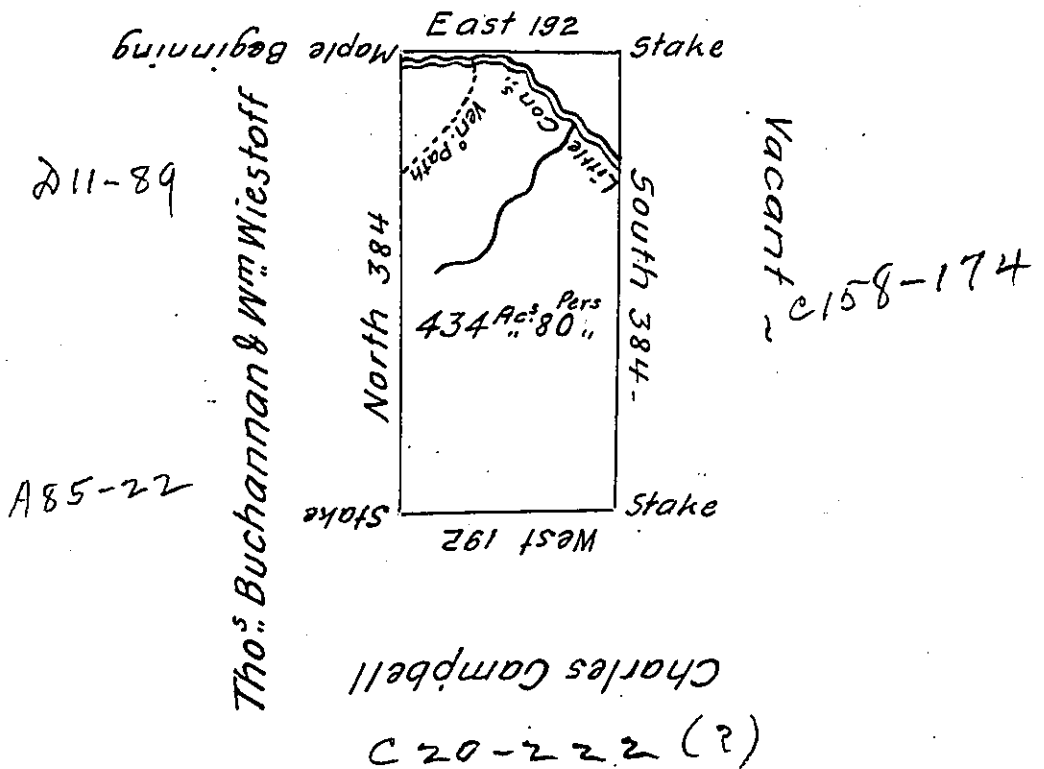


George Robison
C170-278



The above is a Draught of a Survey made May the 10th 1794 in pursuance of ~~of~~ a Warrant Granted to John Irvine for 400 Acres of Land Dated the tenth day of February 1794 Situate on the South Side of Little Conaquesnessing Creek where the Venango Path Crosses Said Creek North and West of the River Ohio. Called Silvey Containing four hundred thirty four Acres and an half together with the Usual Allowance of Six $\frac{1}{2}$ Cent for Roads.

To Daniel Brodhead Esq. }
Surveyor General. } Jonathan Leet D.S.

IN TESTIMONY that the above is a copy of the original remaining on file in the Department of Internal Affairs of Pennsylvania, made conformably to an Act of Assembly approved the 16th day of February, 1833, I have hereunto set my Hand and caused the Seal of said Department to be affixed at Harrisburg, this nineteenth day of June 1905.

George R. Brown
Secretary of Internal Affairs.